

SUMMER BOYS -PRIMARY

SHIRT: SBS02

Single plain pocket with logo.
 Yolk at the back with box pleat.
 Logo size 40mm



SBS02



TROUSER: SBT02

Shorts
 Single pleat at the front
 Slant Pocket
 Straight fit
 Back welt pocket with simple button & Button hole
 Fabric -
 Waist adjustment as shown below:



SBT02



SBS02

SHIRT: SBS02

Single pocket with
Logo patch
Yolk at the back with box pleat
Logo size 50 mm



TROUSER: SBT02

Single pleat at the
front
Straight fit
Back welt pocket
with simple button & Button hole



SBT02



Waist adjustment as shown below:



SUMMER GIRLS- PRIMARY & SECONDARY

SHIRT: SBS02

Single pocket with logo patch
Yolk at the back with box pleat



SBS02



SKIRT: SSK04

Knee Length
Button and zip on the left side seam
Slit pocket on the right side seam
Loops at the waist belt
Waist adjustment as shown below:



SSK04



Pleat stitched till hip level.



T-SHIRT: SPT06 A

Solid T-shirt

Raglan sleeves

2 white stripes at shoulder to neck line

2 thin stripes at the collar (rib knit)

Logo on the left side

Small slit of both sides of the hem line

TRACK PANTS :

White colour track pants.

Straight fit

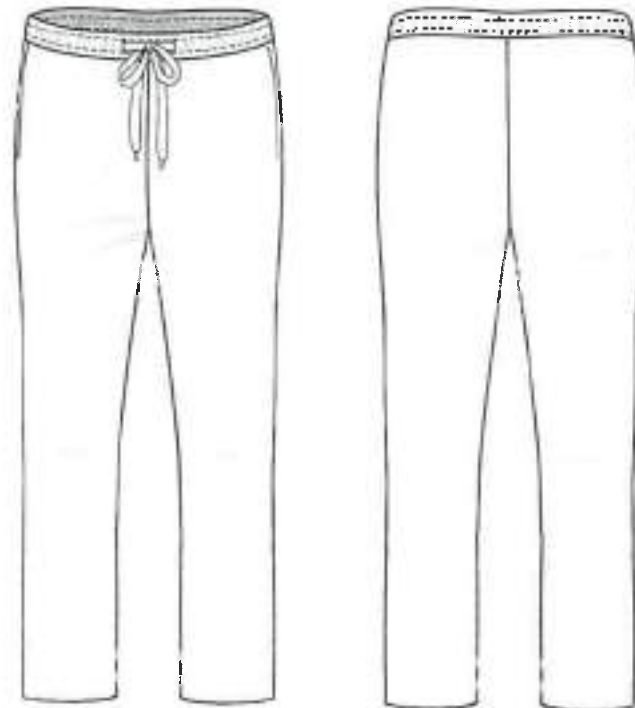
Slant pocket

2 thin stripe of house colour, matching to the t- shirt.

Elastic at the waist with loop and cord in the center front.

Cord to adjust the waist elastic

SPT06 B



JACKET : SPJ01

Solid Navy blue colour Jacket with shirt collar and front open zip.
 Grey colour fabric below the collar
 Slit pocket in the side seam on both sides with 2mm grey piping
 Logo on the left side
 Fabric is fleece



TRACK PANTS :

Navy Blue colour track pants.
 Straight fit
 Slant pocket on the side seam
 Elastic at the waist with loop and cord in the center front.
 Cord to adjust the waist elastic.



WINTER BOYS/ GIRLS – PRIMARY / SECONDARY



SHIRT: SBS02

- Single pocket with logo
- Classic collar
- Full Sleeve Shirt
- Yolk at the back with box pleat



SBS02



TROUSER: SBT02

- Plain grey fabric
- Single pleat at the front
- Straight fit
- Back welt pocket with simple button & Button hole

SBT02



Waist adjustment as shown below:



WINTER GIRLS - BLAZER

Blazer: SGBL01

Narrow lapel

Thin light blue piping of 2mm

Logo on left size

Princess seam for

better fit with a slip pocket

Buttons same as blazer colour

SGBL01



Slip pocket
on the
seam

Slip pocket

[invisible on princess seam]



Blazer: SBL01

SBL01

Blazer for Boys -

Classic shawl collar

With very thin light blue piping (2mm)

Flap pockets and one patch pocket with slight round edges on the top with Logo patch.

Size of the patch pocket smaller, as per the size of the blazer

Buttons same as blazer colour



SWEATER: PSSW07

PSSW07

Cardigan- Navy blue
with cable pattern of
the knit

Light blue stripe comes
inside the rib portion at the
Neck line and the cuff





Style no:

CPPS 04

Gender:

Style name:

CAPS - STYLE 4

Category:

Comments:

Date:

NCS embroidered with the house colour and a

Thin colour strip
of house colour
on the edge of
peak of the cap.



STYLE 10

Tie :

Navy Blue solid colour tie with logo
in the center.

Style 10 - light blue colour 2 thin
diagonal stripes (Thickness of
stripe 2mm)

Light blue colour same as shirt
colour



BELT: SPB2

The belt has blue and white stripes or solid blue colour

Steel buckle with NCS logo in the center



SSOC 01

SSOC 08

Socks: **SSOC 08**

Regular – summer and Winter

Summer - Plain navy blue with 2 thin light blue lines, just below the cuff of socks. Light blue colour same as shirt colour.

(Thickness of stripe 2mm)



Regular Socks- Summer



Regular Socks- Winter

Winter – Plain Grey socks

Navy blue and Grey colour same as the trouser colour

SUMMER GIRLS/ BOYS - PRIMARY / SR. SECONDARY



FRONT VIEW



WINTER GIRLS – PRIMARY / SR. SECONDARY

